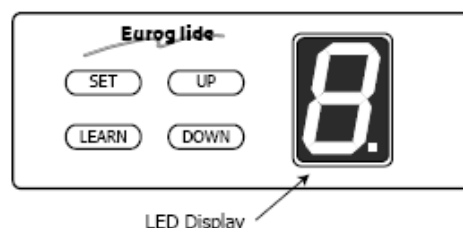


PROGRAMMING THE EUROGLIDE

6.1 PROGRAMMING CONTROLS

- SET** = Mode Set & Confirm Functions
- LEARN** = Transmitter Code Set & Clear Function
- UP** = Up Limit Function
- DOWN** = Down Limit Function



6.2 PROGRAMMING OPEN & CLOSE LIMITS



2a Press and hold **SET** until **1** is indicated on the LED display (the opener is now in programming mode)

2b Press and hold **UP** to set the OPEN limit, release the button when the door has reached the desired position.

Note: If the door has overrun the open position, press **DOWN** to move the door downwards. **UP** & **DOWN** can be used to make fine position adjustments.



2c Press **SET** to confirm the OPEN limit position. The LED display will now indicate the number **2**.

2d Press and hold **DOWN** to set the CLOSE limit, release the button when the door has reached the desired position.

Note: If the door has overrun the close position, press **UP** to move the door upwards. **UP** & **DOWN** can be used to make fine position adjustments.

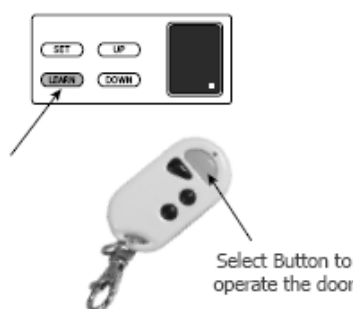


2e Press **SET** to confirm the CLOSE limit position.

CAUTION:

The door will now do a complete open & closed cycle to map its end of travel limits, and set its sensitivity requirements. The door is now set for normal operation.

6.3 PROGRAMMING HAND TRANSMITTERS



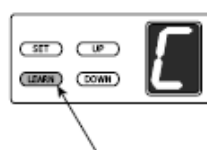
3a Storing the Hand Transmitters

Press and release **LEARN**. A dot will be indicated in the corner of the LED display.

3b Press the button (one of four) on the transmitter you would like to use to control the door for 2 seconds, pause for 2 seconds, then press the same button again on the transmitter for 2 seconds.

The Dot in the corner of the display will flash to confirm the code, then turn off. Repeat this process for additional remotes that need to be stored.

Note: The POWERGLIDE operator is fitted with 'Last Code Delete' which means that only one button per Transmitter can be stored to operate the unit. This function prevents over coding stored transmitters when there are multiple users accessing the same garage door. The other three buttons on the transmitter can be programmed to access automatic gates, security or courtesy lights, etc.



3c Deleting Stored Transmitters

Press and hold **LEARN** for 10 seconds, until C flashes on the LED display. This indicates that all stored transmitters have been deleted.