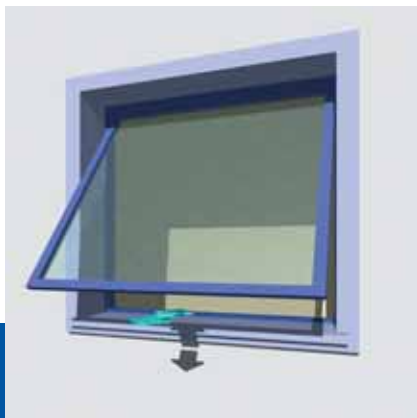
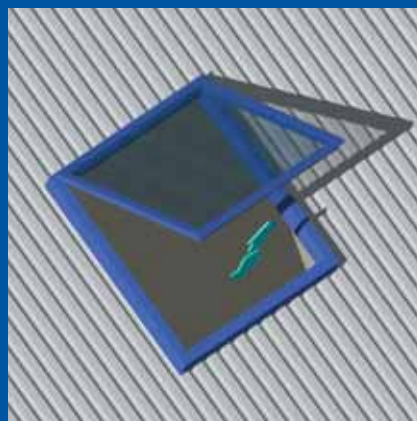


Attuatore a catena per:
finestre a sporgere, finestre a
vasistas, finestre per
mansarde.

Chain actuator for:
top hinged windows, bottom
hinged windows, roof
windows.



200N



Dimensioni ridottissime
Very reduced dimensions

Catena a doppia maglia
Double-link chain

Basso consumo
Low consumption

Assenza di manutenzione
Maintenance free

Grado di protezione: IP 20 / *Protection degree IP 20*

Fine corsa chiusura-apertura: Sensore Hall-Assorbimento / *Limit switch closing-opening: Hall sensor-Absorption*

Colore: Anodizzato argento (A) - Anodizzato nero (N) - RAL 9016 (C)
Colour: Anodised silver (A) - Anodised black (N) RAL 9016 (C)

DATI TECNICI **Micro S** / **TECHINAL FEATURES Micro S**

CODICE CODE	DESCRIZIONE DESCRIPTION	VOLTAGGIO VOLTAGE	SPINTA TRAZIONE THRUST TENSILE	CORSA STROKE	ASSORBIMENTO MAX CONSUMPTION MAX	VELOCITÀ MIN. SPEED MIN.
2700115	MICRO S 200 mm - A	230 V~ / 50 Hz	200 N	200 mm	30 W	ca. 10 mm/s
2700552	MICRO S 200 mm - N	230 V~ / 50 Hz	200 N	200 mm	30 W	ca. 10 mm/s
2700327	MICRO S 200 mm - C	230 V~ / 50 Hz	200 N	200 mm	30 W	ca. 10 mm/s
2700055	MICRO S 250 mm - A	230 V~ / 50 Hz	200 N	250 mm	30 W	ca. 10 mm/s
2700567	MICRO S 250 mm - N	230 V~ / 50 Hz	200 N	250 mm	30 W	ca. 10 mm/s
2700328	MICRO S 250 mm - C	230 V~ / 50 Hz	200 N	250 mm	30 W	ca. 10 mm/s
2700116	MICRO S 200 mm - A	24 V =	200 N	200 mm	20 W	ca. 10 mm/s
2700562	MICRO S 200 mm - N	24 V =	200 N	200 mm	20 W	ca. 10 mm/s
2700329	MICRO S 200 mm - C	24 V =	200 N	200 mm	20 W	ca. 10 mm/s
2700117	MICRO S 250 mm - A	24 V =	200 N	250 mm	20 W	ca. 10 mm/s
2700578	MICRO S 250 mm - N	24 V =	200 N	250 mm	20 W	ca. 10 mm/s
2700330	MICRO S 250 mm - C	24 V =	200 N	250 mm	20 W	ca. 10 mm/s

I VALORI PRESTAZIONALI RIPORTATI NELLA TABELLA SONO VERIFICATI AD UNA TEMPERATURA DI FUNZIONAMENTO DA -10°C/+40°C CON UN'UMIDITÀ RELATIVA MASSIMA DEL 60%.
THE VALUES INDICATED ON THE TABLE WERE RECORDED IN A CLIMATIC TEST CHAMBER AT OPERATING TEMPERATURES BETWEEN -10°C/+40°C WITH MAX 60% RELATIVE HUMIDITY.

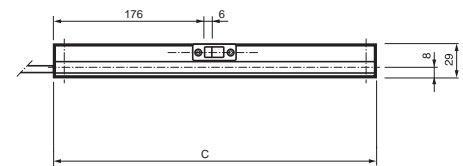
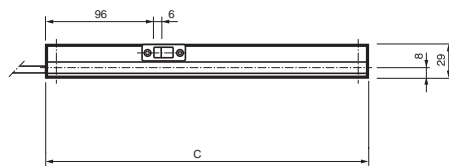
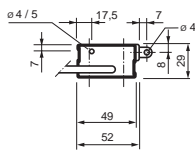
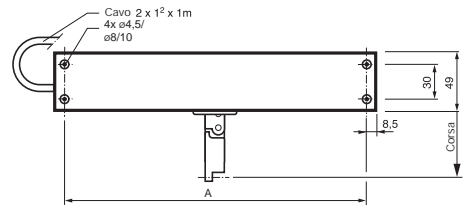
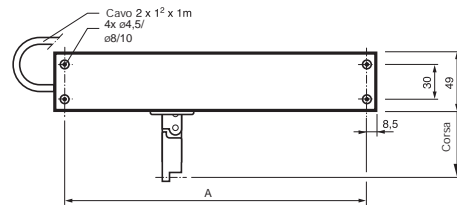
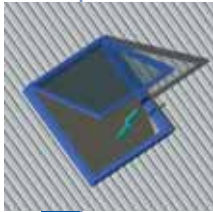
DESCRIZIONE DI CAPITOLATO

Attuatore elettrico lineare MINGARDI con movimento a catena articolata contenuta all'interno dell'involucro. Funzionamento con tensione di alimentazione 230V~ 50 Hz o 24V CC Conforme alle Direttive 73/23 LVD – 89/336 EMC come modificate da 93/68 CE (per il funzionamento a 24V CC conforme alle Direttive 89/336 EMC come modificate da 93/68 CE). Dotato di sistema di fine corsa elettronico. Collegabile in parallelo. Colori disponibili: anodizzato argento / anodizzato nero / RAL 9016.

DESCRIPTION OF SPECIFICATIONS

MINGARDI linear electric actuator with reinforced double-sprocket chain inside the actuator body. Operation at 230V~ 50 Hz. o 24V DC voltage. In conformity with Directives 73/23 LVD - 89/336 EMC as modified by 93/68 CE (compliant with Directives 89/336 EMC as modified by 93/68 CE for 24V DC operation). Outfitted with electronic limit switch system for opening and closing, which can be connected in parallel. Colours available: anodised silver or anodised black / 9016 RAL.

Micro S Disegno dimensionale / Micro S Scale drawing



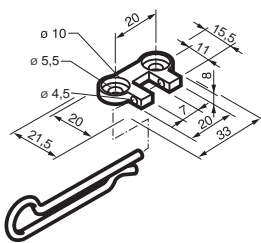
VERSIONE 24V CC
24V DC VERSION

Corsa/Stroke	A	C
200	224	261,4
250	269	286,4

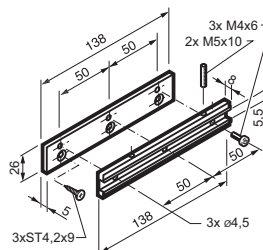
VERSIONE 230V AC
230V AC VERSION

Corsa/Stroke	A	C
200	324	341
250	349	366

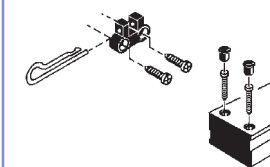
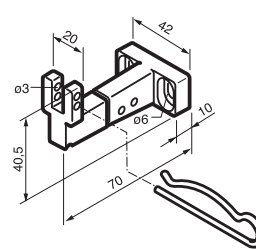
Accessori - Ricambi / Accessories - Spare parts



2700093



2700094



2700096

ACCESSORI DI FISSAGGIO / FIXING ACCESSORIES

CODICE CODE	DESCRIZIONE DESCRIPTION
2700093	Kit universale per applicazioni su finestre a sporgere Universal kit for fitting top-hinged windows
2700094	Kit universale per applicazioni su finestre a vasistas Universal kit for fitting bottom-hinged windows
2700096	Kit universale per applicazioni su finestre a mansarda Universal kit for fitting roof windows
2700080	Staffa basculante per applicazioni su bancale Pivoting bracket for horizontal plane applications

RICAMBI / SPARE PARTS

CODICE CODE	DESCRIZIONE DESCRIPTION